

# Common Mode Choke HT752T Series



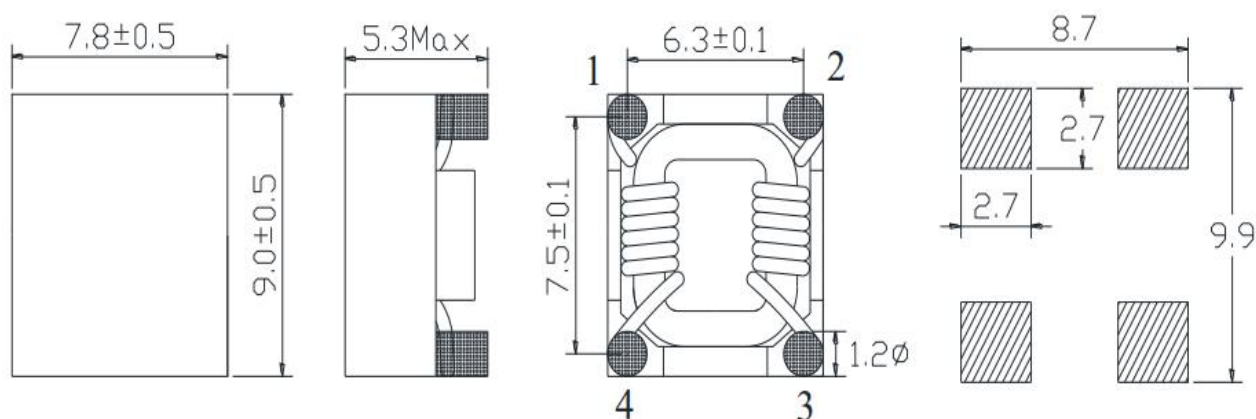
## Features

- Compact size high performance and low cost.
- Large impedance at high frequencies.
- Excellent high frequency characteristics.

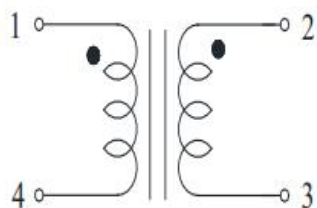
## Application

- Applied equipment: TV, VCR, Switching power NC machines, Computes systems and Measuring instruments.

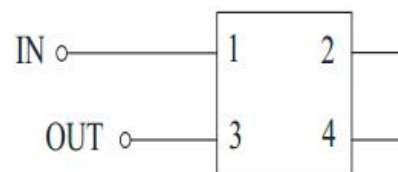
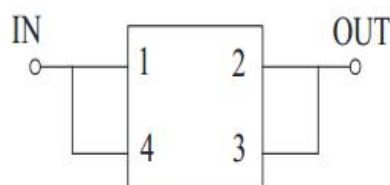
## Configurations & Dimensions



## Schematic



## Test Mode



## Specifications HT752T

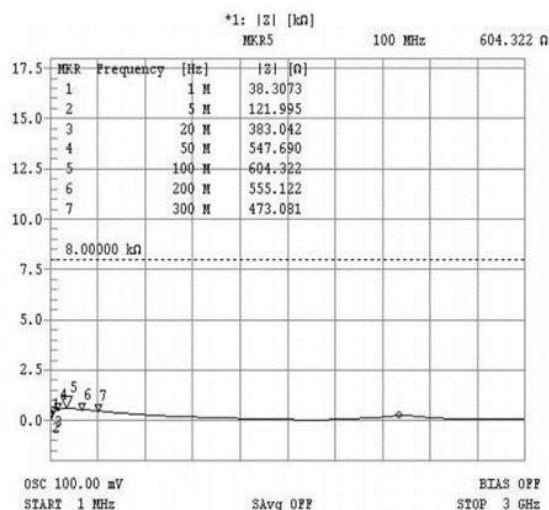
Part Number	Common Mode Impedance @ 100MHz $\pm 25\%$	Rated Current (A) max	DC Resistance (m $\Omega$ ) max	Rated Voltage
HT752T-501M	500 $\Omega$	5	10.0	80VDC
HT752T-801M	800 $\Omega$	3.5	20.0	80VDC
HT752T-102M	1000 $\Omega$	2.5	50.0	80VDC

# Common Mode Choke HT752T Series

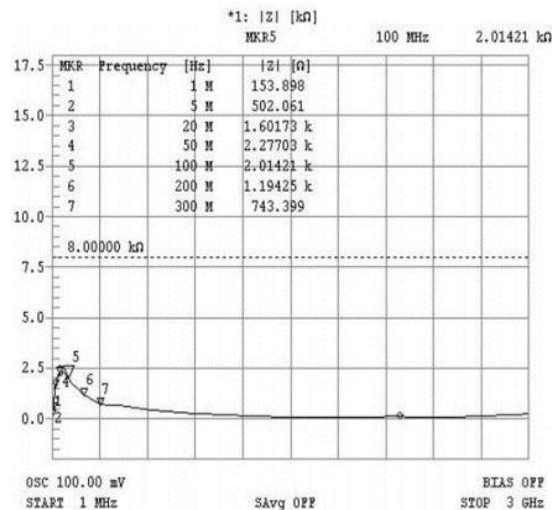


## Impedance & Frequency

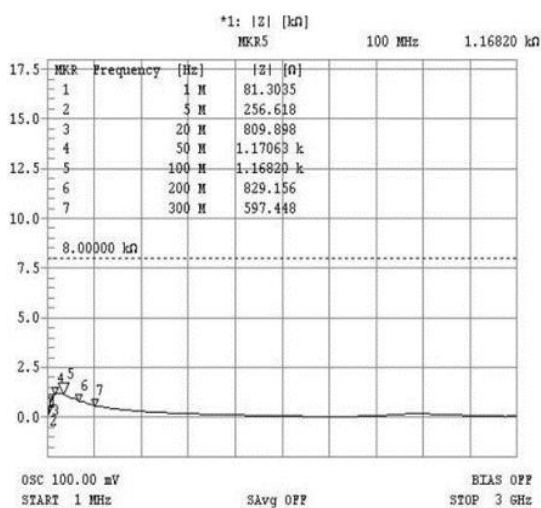
HT752T-501 Common mode



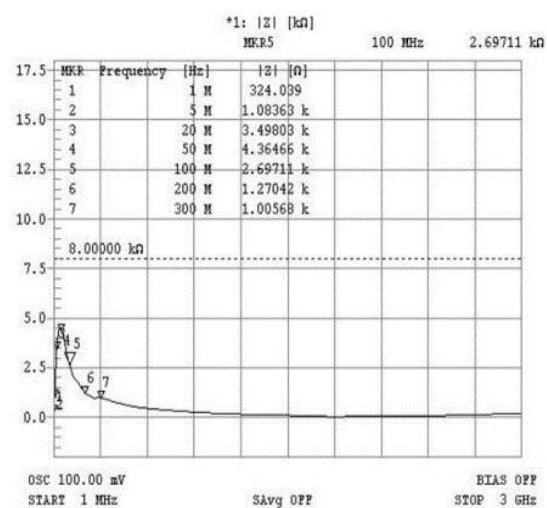
HT752T-501 Normal Mode



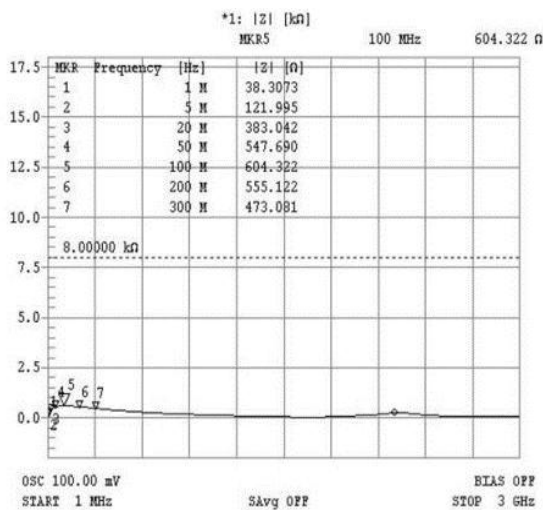
HT752T-801 Common mode



HT752T-801 Normal Mode



HT752T-102 Common mode



HT752T-102 Normal Mode

